



CONNECTIONS

Western Ohio Chapter • National Electrical Contractors Association



Published for members of NECA, Western Ohio Chapter • IBEW Local 82 • Miami Valley Business Community

January, 2021

Dayton Holiday Festival...2020

The challenges faced with regard to planning the downtown parade last December during the COVID-19 pandemic were significant. Initially, the Downtown Dayton Partnership had planned the Dayton Drive-Thru Children's Parade in Lights. Spectators would slowly pass through several blocks of downtown streets in their own vehicles, getting an up-close view of the lineup of festive floats, holiday entertainment, and hundreds of thousands of lights that would be on display along downtown Dayton's Main Street.

NECA/IBEW are major sponsors of the Dayton

Holiday Festival. In 2019, our volunteers worked on refurbishing the floats, which had been vandalized.



Downtown Dayton Holiday Lights.

In 2020, the NECA/IBEW team was ready to help provide necessary electrical

requirements of lighting stages and events for the stationary parade.

However, due to the stay-at-home advisory issued for Montgomery County, the parade

had to be canceled. The Dayton Holiday Festival team had worked hard for months creating a free, family-friendly event, but the stay-at-home advisory went into effect a week before the scheduled event.

One of the huge wins was the Grande Illumination television special that aired on WHIO-TV/Channel 7 on Friday, November 27. The show covered the history of the annual tree lighting and downtown festivities which have taken place during the holidays for years. Local musicians and dancers were also featured. NECA/IBEW also contributed toward the Grande Illumination special. Hopefully, this year the parade will be able to take place as in years past.

ESI Project *WPAFB Propulsion Research Lab*

ESI, Inc. is pleased to be the Electrical Contractor on the Wright-Patterson AFB Facility 20490 Fuel Farm Upgrades that is being managed by Messer Construction and the Army Corps of Engineers. This project consists of the installation of eighteen new underground fuel storage tanks ranging from 3,000 gallons up to 25,000 gallons. A new fuel system controls building is being constructed that will house the new motor controls centers and an instrumentation control system.

ESI is contracted for the installation of the new motor

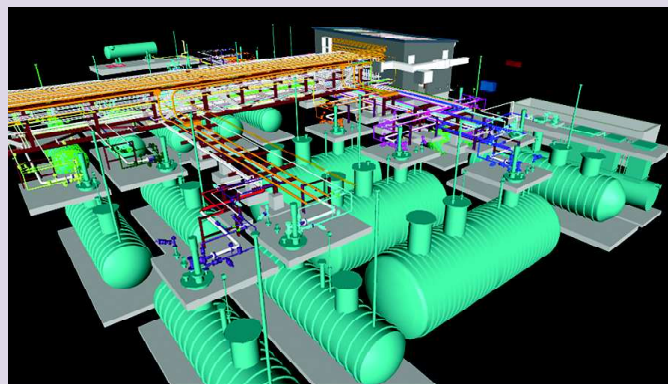
controls center, all conduit, wire, and connections to the fuel control panels and pumps. ESI is also responsible for the

installation of conduit and wire to a complex instrumentation controls system. The project team is being led by Project

Manager Scott Howard and Foreman Matt Westwood. They are looking forward to a successful completion of this project in June of 2021.

ESI Electrical Contractors, with over 50 years in business, serves Ohio, Kentucky and Indiana. ESI prides itself on the ability to encompass the entire range of interior and exterior electrical projects including both high and low voltage work. Their project diversity includes healthcare, schools, process control, power generation and manufacturing.

www.esielectricalcontractors.com



Fuel Farm upgrades at WPAFB.

URS 42nd Telethon

While the 42nd United Rehabilitation Services Telethon, presented by IBEW/NECA looked a little different this year, the event continued its tradition of celebrating the triumphs of the people URS serves each day. This year's telethon, which took place on December 6, 2020 raised a record-breaking \$144,000!

Matt and Eileen Bonelli, long-time supporters of URS served as chairs. Josh Tye served as the Adult Ambassador and Tion Thompson, was their Youth Ambassador.

Sponsors for the Telethon included:
Presenting Sponsor: IBEW/NECA
Feature Sponsor: Hollywood Gaming at Dayton Raceway
Microphone Sponsor: Sporty's Trikes and Bikes
Corporate Sponsor Board: Dayton Freight

Star Board Sponsor: Rieck Services
Due to the pandemic, much of the event was pre-recorded. Staff interviewed families and community partners via Zoom prior to the

Matt and Eileen Bonelli and special guest, Charles D. Berry. Volunteers manned the phone banks virtually and checked in periodically using Zoom.
The Telethon featured interviews with:



United Rehabilitation Services
Of Greater Dayton

at the Charles D. Berry Center

telethon and WDTN's production crew wove the recorded stories around limited live segments hosted by Mark Allan and Brooke Moore. A film crew was at URS with Dennis Grant, URS's Executive Director, along with chairs,

Greg Gust, Business Manager, IBEW Local Union #82, along with other sponsors.
Interviews were held featuring their ambassadors and client families, along with several other guests.

For over 60 years, URS has been providing hope for families around the Miami Valley. The URS began in the 1950s as an informal support group created by parents advocating for their children with cerebral palsy. The URS offers a wide variety of services for people with disabilities and their families including: adult daycare, adult latch key, augmentative communications, childcare, hearing aid service, physical therapy, occupational therapy, speech pathology and vocational training. With more than 12 special events each year, volunteers are essential to their success! Everyday URS relies on individuals, companies and community groups to fulfill their mission of enhancing the quality of life for their clients.

For more information visit ursdayton.org.

Chapel's Wayne Hospital Expansion

Chapel Electric is nearing completion on the Wayne Hospital Expansion and remodel in Greenville OH. This \$40 million project will open in early March and will further establish Wayne Healthcare as the northern area's leader in modern healthcare services, infrastructure and amenities. The new 3-story 85,000 square foot expansion offers a number of exciting new features, highlighted by a new 32 bed "acuity adjustable" nursing unit; this new concept in nursing means that a patient won't need to be transferred to different units as they recover. There will be a new Cardiac

rehab center and a new "Special Beginnings" birthing center which includes seven labor and delivery rooms with hotel and spa-like touches and furnishings. There will be a new public entry and concourse linking the new addition to the main hospital lobby. Parts of the existing facility are being fully remodeled to better serve its patients and staff. The Lifestyle Enhancement and Wellness Center has been

expanded to include a large gym and indoor running track and the Loading Dock & Materials Management areas



Wayne Hospital Expansion.

have been redesigned in order to improve access and ease use.
Chapel Electric's construction team included Joe Knapke as Project Manager and Steve Fullmer as Project

Foreman. The electrical scope for the expansion included a new 2000A power distribution system, a state-of-the-art lighting and lighting control package and a new fire alarm throughout the facility. Our team installed 14 miles of conduit, 132 miles copper wire and cable along with 1,700 wiring devices.



January, 2021

Your comments, suggestions and questions are welcome! Contact the Western Ohio Chapter - NECA.

e-mail: info@wocneca.org
website: www.wocneca.org
phone: 937-299-0384

The next best thing... Lighting Control Systems

As they say, necessity is the mother of invention. Historically, the manner in which we produce and deliver light has made incremental improvements since the days of the kerosene lamp. Edison's incandescent light bulb in 1880 was a huge leap forward, proving to be more economical, convenient, and safe than the widely used gaslight. Today, we continue to look for ways to reduce lighting costs even further, and use energy more wisely.

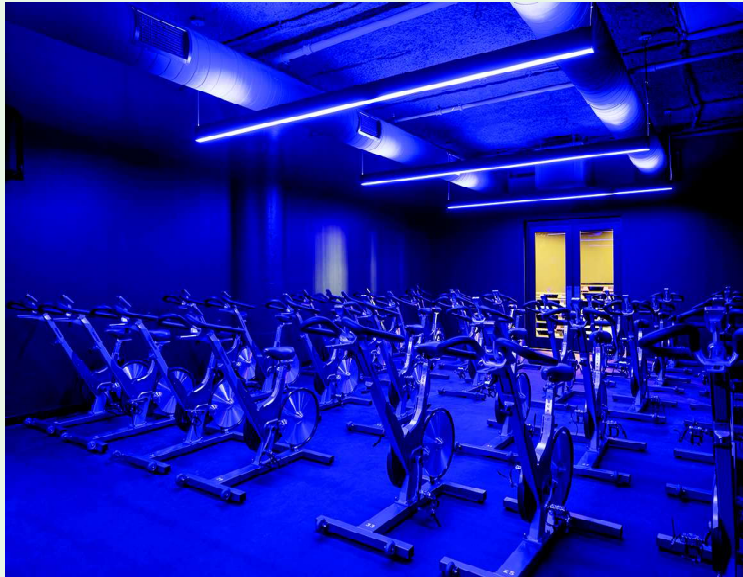
Cutting-edge trends today include networked lighting controls. Beyond the ability to adjust output and turn lights on and off, lighting-control systems can now adjust light-source color, including shades of white light, and generate data by measuring and monitoring usage. In addition to all of these capabilities that help increase productivity and convenience in the workplace, lighting-control systems are also a huge contributor to energy savings and efficiency.

There are various types of lighting controls that can be implemented into an office building, facility, or out in the community—all of which have different purposes and can be used to track different data points.

Luminaire and room-based control systems integrate sensors within luminaires which allow them to respond individually for greater flexibility and energy savings. These work well for health care systems like nursing homes and rehabilitation centers.

Building and enterprise based control systems are

networked across a building or multiple buildings. Facility managers can then program all lighting control using operating software and potentially pull performance and other data to a central server or the cloud. This system works well for facilities



Color tuning can improve your mood in a workout session.

with multiple buildings, such as college campuses or health care systems.

The network control approach assigns all control points a unique address for individual or group programming and can be operated autonomously or integrated with other building systems. Networked control offers several advantages including detailed control zoning, distributed intelligence, zoning using software, programmability, data generation, and more. It can always be suitable in many lighting upgrade projects if paired with wireless communication. This approach works well for organizations focused on increasing or implementing energy-efficiency practices.

Lighting-control systems all allow data collections from control points connected via a digital wired or wireless network and may directly measure, estimate energy consumption, or monitor operating parameters. IoT smart lighting uses

wireless switches, eliminating the need to wire light switches directly to fixtures. Additional sensors embed in the luminaire can collect data like occupancy and temperature, and in outdoor lighting control systems, some sensors can even collect data on things like carbon monoxide levels and snowfall. The collected data is fed to a server or to the cloud for retrieval and use via software. Energy-consumption data may be analyzed and shared for a variety of purposes. Monitored conditions may prompt alarms for maintenance response. Data collection is great for organizations to improve building performance, productivity, and energy efficiency.

Community Benefits

Lighting controls have also become very useful in public spaces—especially LED lighting. Essentially, new LED “smart light” fixtures can be equipped with motion, photo, audio, environmental, and water sensors, along with a small computer processor, equipping them with the ability to count and collect data about actions, temperatures, humidity, carbon dioxide levels, rainfall, wind, and other conditions.

LED lighting systems offer the following benefits in public spaces:

Public safety: Detecting suspicious activity, responding to emergencies, recognizing license plates

Asset management: Notifying drivers of available parking spots or tracking the movements of boxes in a warehouse

Environmental monitoring: Measuring temperatures, greenhouse gases, and even earthquake vibrations

Retail analytics: Deciphering trends in customer activities

Color tunable lighting can be implemented in lighting control systems. It allows users to control the color of light anytime and attune lighting to individual preferences or specific application needs. Color heightens and deepens the senses. This may lead to improved working conditions and better retail and hospitality experiences. As lighting changes in color, for example, a patron's attention can be drawn to an area showcasing a display, goods or services. Color tuning can adapt, soften and elevate human experiences.

We've come a long way since the first incandescent light bulb!



Presorted
Standard
U.S. Postage
PAID
Dayton, OH
Permit 644

In This Issue

- 42nd URS Telethon
- Downtown Dayton Festival
- ESI project at WPAFB
- Chapel at Wayne Hospital



www.wocneca.org

Looking Forward

2020 was a year of turmoil that most of us will not forget. A pandemic, protests, economic struggles, and the assault on our Capital have left many of us breathless and hoping for a better life in 2021. The words of Amanda Gorman, the Poet Laurette who spoke at the inauguration of Joe Biden and Kamala Harris give us that hope.

“And yes, we are far from polished,
 Far from pristine,
 But that doesn’t mean we are striving to form a union
 that is perfect.
 We are striving to forge a union with purpose,
 To compose a country committed to all cultures, colors,
 characters and conditions of man.
 And so we lift our gazes, not to what stands between
 us, but what stands before us.
 We close the divide because we know, to put our future
 first, we must first put our differences aside.
 We lay down our arms so we can reach out our arms to
 one another.
 We seek harm to none, and harmony for all.
 Let the globe, if nothing else, say this is true:
 That even as we grieved, we grew.
 That even as we hurt, we hoped.
 That even as we tired, we tried.”

The Western Ohio Chapter - National Electrical Contractors Association Directory:

NECA Members

ASIDACO, LLC
 C & J Electric
 Chapel Electric Company
 Chapel-Romanoff Technologies
 ESI Electrical Contractors
 GEM, Inc.
 High Voltage Maintenance
 Kastle Electric Company
 Kastle Technologies
 Maxwell Lightning Protection
 RMF Nooter
 Sidney Electric Company
 Stuebaker Electric
 Utility Instrumentation Services
 York Electric, Inc.

Associate Contractors

Capital Electric
 Compass Electrical Solutions
 Cougar Electric, Inc.
 Electricity, LLC
 Glenwood Electric
 Lake Erie Electric
 Mid City Electric

Affiliate Members NECA

Advanced Service Technologies
 Kendall Electrical Supply
 FD Lawrence Electric Company
 Graybar Electric Co., Inc.
 Heapy Engineering
 Riffle & Associates
 Square D / Schneider Electric
 Uptime Solutions

Western Ohio Chapter - NECA
3131 South Dixie Hwy. Ste. 415
Dayton, OH 45439

